

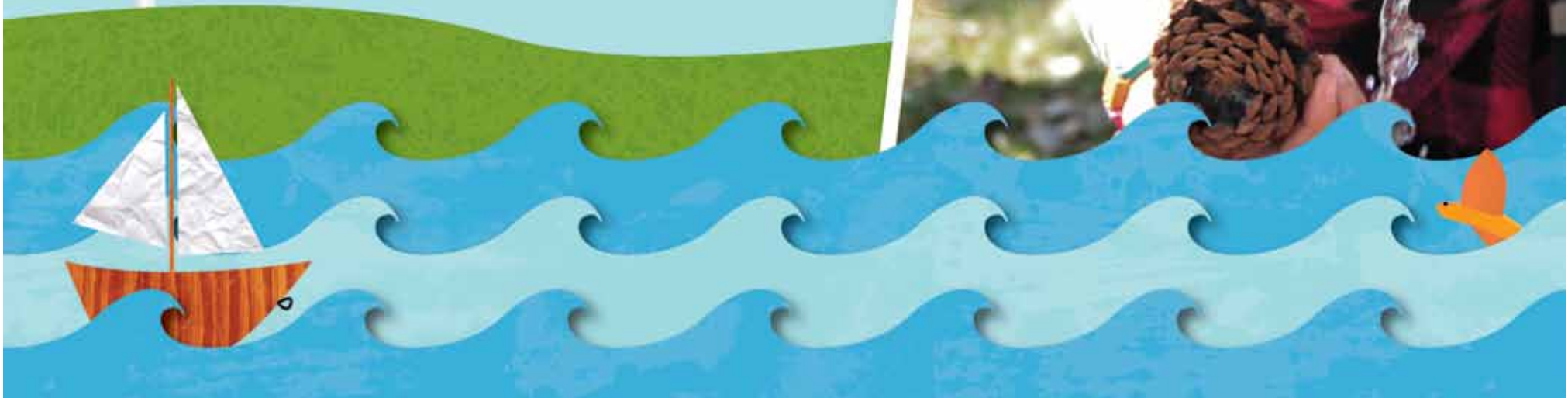
What will you do today?

Start by making a difference.

We recently asked girls what mattered to them most and the overwhelming response was, “the environment.” It was that impassioned reply that led us to develop and launch **“Girl Scouts Forever Green.”**

“Girl Scouts Forever Green” is a large-scale project where girls will discover themselves, connect with others and take action by implementing a project that benefits both the environment and their community. We are inviting you to participate!

Find out more inside.





GIRL SCOUTS *forever green*

Splish-Splash, Drip-Drop: The Water Cycle's Non-stop!

Join Girl Scouts for full day devoted to water that will change the way you look at the world. In collaboration with The Groundwater Foundation, the Nebraska NRD and participating Nebraska universities, we have developed a fun and informative program that will inspire and enlighten.

Learn just how much of our planet is made up of water and why it's so important to conserve and keep water clean. You will also participate in age-appropriate, interactive sessions, such as:

- Water Cycle Bracelets
- Aqua Bodies
- Clean Water Challenge
- Awesome Aquifers
- Freddie the Fish
- No Water off a Ducks Back
- You Be the Judge

And everyone will earn a "Girl Scouts Forever Green" recognition

These programs are for all ages.

Girl cost for groups between 1 and 7: \$14 each.

Includes all materials, recognition and snack.

Girl cost for group or 8 or more: \$10 each.

Includes all materials, recognition and snack.

Adult cost: \$2

Please bring a sack lunch.

You can use the registration form in this brochure or register online at girlscoutsnebraska.org/blog/forever-green. Questions? Please contact Erin, ehuerter@girlscoutsnebraska.org or 402.779.8227.

Splish-Splash Papillion

Saturday, January 22

9 a.m.-3 p.m.

Registration Deadline:

Friday, January 7

Location: Camp Maha,
17114 S. 63rd Street

Splish-Splash Lincoln

Saturday, January 29

9 a.m.-3 p.m.

Registration Deadline:

Friday, January 14

Location: Eastridge
Presbyterian Church, 1135
Eastridge Drive

Splish-Splash Scottsbluff

Saturday, February 5

9 a.m.-3 p.m.

Registration Deadline:

Friday, January 22

Location: YMCA Trails West
Camp, 1918 S. Beltline Hwy

Splish-Splash Norfolk

Saturday, February 26

9 a.m.-3 p.m.

Registration Deadline:

Monday, February 11

Location: Northeast
Community College, Lifelong
Learning Center,
801 E. Benjamin Avenue

Splish-Splash Grand Island

Saturday, April 9

9 a.m.-3 p.m.

Registration Deadline:

Friday, March 25

Location: Camp Cosmo,
2400 E. Wildwood Drive



Splish-Splash Drip-Drop Registration Form

Please fill out the form completely with name(s) of all attendees and an emergency contact for each. If you have more girls than this form will accommodate, please feel free to make copies of this registration. Should you have someone cancel and/or you would like to add another person, let us know as soon as possible. Please see our cancellation policy on page 6 of our 2010/2011 Program Book available at girlscoutsnebraska.org.

Event **Splish-Splash Drip-Drop** _____ Location _____ Date _____

Leader or guardian name _____

Address _____ City _____ State _____ Zip _____

Cell phone _____ Home phone _____

Email address _____

Please Note: In the event of an emergency, we need to have a list of all attendees and their health information available. Before you arrive at the event, please make sure you have a health history card for each girl and adult. If you don't have a health history card, please contact Erin at ehuerter@girlscoutsnebraska.org or 402.779.8227.

Attendee Name(s)	GS Grade D B J C S A or Adult	Emergency Contact Name and Phone Number
1.		
2.		
3.		
4.		
5.		
6.		
7.		
8.		
9.		
10.		

Number of girls	_____				
Cost per girl	<table style="margin-left: 20px;"> <tr> <td>0-7 girls</td> <td>8 or more girls</td> </tr> <tr> <td>x \$14</td> <td>x \$10</td> </tr> </table>	0-7 girls	8 or more girls	x \$14	x \$10
0-7 girls	8 or more girls				
x \$14	x \$10				
Subtotal	= \$ _____				
"Cookie Dough" Certificate(s)	- \$ _____				
Non Girl Scout member fees	+\$ _____				
<small>\$12 x # of non-members =</small>					
Total	= \$ _____				


girl scouts
spirit of nebraska
2121 S. 44th St.
Omaha, NE 68105




GIRL SCOUTS
forever green
Splish-Splash Drip-Drop Events
Join Us!